

APPROVED PLAN A

925 & 935 Valley View Street • Lots 2 & 3

NOTE: USE OF THIS PLAN IS OPTIONAL

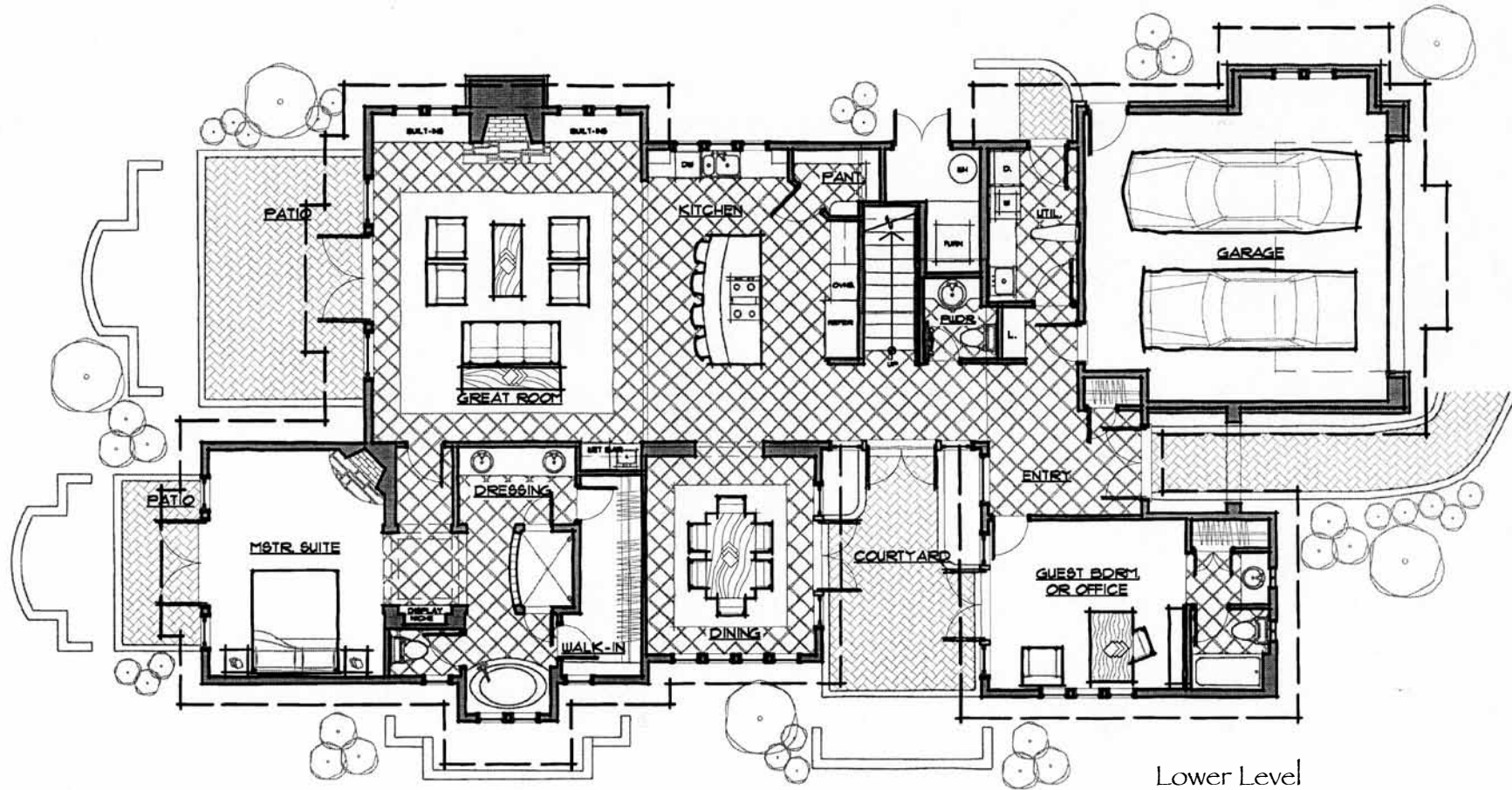


Choice In-Town, West St. Helena Location

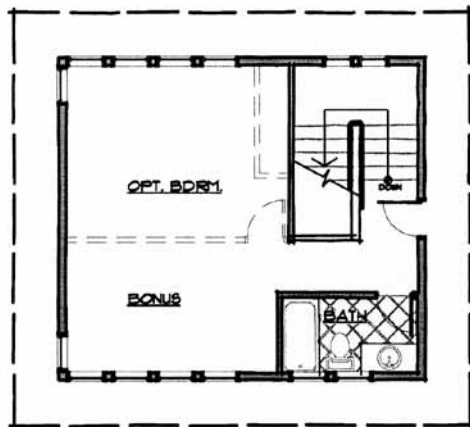
- Valley View Lots 2 & 3 offer southern exposures and vineyard views.
- Lot 2 overlooks Sulphur Springs Creek and also has Western Hills' views.
- Plan A home design has been developed and approved for construction on Lots 2 & 3. Other plans may be used, but would have to go through the approval process.
- The lower level includes the master suite, a second bedroom, and 1-1/2 baths. The upper level has a third bedroom and bath.

For Sales Information, Contact Howard Spector • 541.317.2950 • howard@mbdsarchitects.com

Plan A • Lots 2 & 3 • 925 & 935 Valley View Street



Lower Level



Upper Level

ATTIC STORAGE

Approximate Square Footage

- Main Level.....2225 sf
- Upper Level..... 423 sf
- Total Living2648 sf
- Garage.....461 sf

Design by

ABDO MOUNT BACHELOR DESIGN STUDIO

ARCHITECTURE AND PLANNING

3195 N.W. KIDD PLACE • BEND, OREGON 97701
 PHONE 541.317.2950 • FAX 541.317.2906
 www.mbd architects.com • mbds@bendcable.com